

Partly a Grandmaster for New Zealand

A TOURNAMENT SITE just a few hundred metres from the United Nations building seemed appropriate for such a cosmopolitan event as the 1980 New York Invitational. For a start the "official" tournament language was not English... but Russian! The USA has become a popular resting place for Soviet emigres such as Leonid Shamkovich, Vitaly Zaltsman, Edmar Mednis, and more recently Roman Dzindzihashvili, although he still represents Israel. We even had our own Soviet defector in the shape of Lev Alburt, now the highest rated American.

Nevertheless the East suffered a remarkable comparative shut-out in the category nine event, part sponsored by the American Chess Foundation and New York's "House of Spain" (where else). Despite the presence of five Grandmasters, an American, Dr Karl Burger — the lowest rated player — and I both scored seven points for first place, and grandmaster norms apiece.

Two or three tournament norms totalling 24 games are needed to obtain the GM title, and this is surely the first time two norms have come from the same tournament since the tough new regulations were introduced by Fide in 1978.

Dr Burger appeared to be riding on the crest of a wave throughout and produced some strikingly original chess. After a penultimate round loss to me he recovered well to beat Alburt in round 10.

I was pleased by my own steady play, undoubtedly due in part to my preparation for the tournament with English Grandmaster Ray Keene. On a personal note I would like to thank the National Bank of New Zealand for their kind support in my quest to become New Zealand's first Grandmaster.



Evgeny Ermenkov



Murray Chandler

5. d6!?

After this pawn advance the game assumes a dynamic tactical character.

- 5. ... Nf6
- 6. Nb5 Na6
- 7. g3 0-0
- 8. Bg2 Re8
- 9. Nh3 e4
- 10. Nf4 b6
- 11. Nd5 Nxd5
- 12. Qxd5 Rb8
- 13. Nxa7!

A rather cheeky pawn grab — but put a spot of red ink on this knight, his career has just begun!

- 13. ... Bb7
- 14. Qd1 e3?

Black has handled the opening well from move five, and here should have proceeded 14...Qf6 15.0-0 Qe6 with unclear play.

- 15. 0-0 exf2 ch
- 16. Rx12 Bd4
- 17. e3 Rxe3!

This was what the Bulgarian had in mind on move 14. Nevertheless 17...Bxe3 18.Bxe3 Rxe3 gave better chances.



E. ERMENKOV

M. CHANDLER

18. Nb5! Qe8

Threatening 19...Rel ch.

- 19. Bxe3 Bxe3
- 20. Bxb7 Rxb7
- 21. Qf3 Rb8?

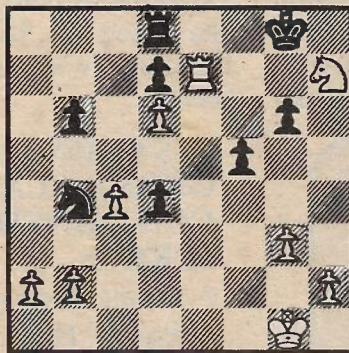
The finesse 21...Bxf2 ch 22.Kxf2 Rb8 23.Rel Qf8 is Black's last chance; White's king is more exposed than in the game. Now I gain the seventh rank for my rook, and a kingside attack with pieces decides.

- 22. Re1 Bxf2 ch
- 23. Qxf2 Qf8
- 24. Re7 Rd8
- 25. Nc3! Nb4
- 26. Ne4 f5
- 27. Ng5 Qf6
- 28. Qd2

Defending the pawn on d6 and the knight on g5.

- 28. ... Qd4 ch
- 29. Qxd4 cxd4
- 30. Nxh7!

E. ERMENKOV



M. CHANDLER

Until Ray Keene pointed it out after the game I did not realise it was the same knight that had captured pawns on both a7 and h7! This final blow is winning — Black's d-pawn is easily halted while White's rook and knight wreak havoc on the seventh rank.

- 30. ... d3
- 31. Kf2 b5
- 32. Nf6 ch Kf8
- 33. Nxd7 ch Kg8
- 34. Nf6 ch Kf8
- 35. Nh7 ch Kg8
- 36. d7 Nc6
- 37. Nf6 ch Kf8
- 38. Re8 ch Kf7
- 39. cxb5! d2
- 40. Ke2 Rxd7
- 41. Nxd7 Nd4 ch
- 42. Kxd2 Kxe8
- 43. Ne5 Resigns.

MURRAY CHANDLER

BENONI DEFENCE

M. CHANDLER (New Zealand)	E. ERMENKOV (Bulgaria)
1. d4	g6
2. c4	Bg7
3. Nc3	c5
4. d5	e5!

The position now resembles a Czech-Benoni defence with Black's bishop in fianchetto. After the game Ermenkov said that in future he would play the more cautious move order of 4...d6 and then ...e5, because of the sharp line I now choose.

NEW YORK INVITATIONAL 1980

	1	2	3	4	5	6	7	8	9	10	11	
1. M. Chandler	IM 2450 NZ	-	1	1	1/2	1/2	1	1/2	1	1/2	1/2	7
2. K. Burger	IM 2335 USA	0	-	1	1/2	1	1/2	1/2	1	1	1/2	7
3. R. Dzindzihashvili	GM 2570 ISR	0	0	-	1/2	1	1/2	1/2	1	1/2	1	5 1/2
4. R. Gruchacz	FM 2365 USA	1/2	1/2	1/2	-	1/2	1/2	1/2	1/2	1/2	1/2	5
5. L. Shamkovich	GM 2515 USA	1/2	0	0	1/2	-	1/2	1	0	1	1/2	5
6. E. Mednis	IM 2485 USA	0	0	1/2	1/2	1/2	-	0	1	1/2	1	5
7. R. Keene	GM 2460 ENG	1/2	1/2	1/2	1/2	0	1	-	1/2	1/2	0	4 1/2
8. E. Ermenkov	GM 2495 BUL	0	1/2	0	1/2	1	0	1/2	-	1/2	1	4 1/2
9. L. Alburt	GM 2515 USA	1/2	0	1/2	1/2	0	1/2	1/2	1/2	-	1	4
10. S. Matera	IM 2410 USA	1/2	0	1/2	1/2	1/2	0	1/2	1/2	0	-	4
11. V. Zaltsman	IM 2460 USA	1/2	1/2	0	1/2	0	0	1	0	1	0	3 1/2

Category: 9

GM = 7

IM = 5